

Exemplary Accessibility/Universal/Inclusive Design Award Projects

UIA Region IV Work Programme “Architecture for All”

www.ulawpafa.hkla.net



The Indus Hospital MDR TB, Ghori Clinic

Year Completed	2009
Location	Korangi Crossing, Karachi, Pakistan
Architects	TAQ Associates, Tariq Alexander Qaiser, Architecture & Interior Design
Contact Details	Tariq Alexander Qaiser, Architect Block 6, Pechs, Karachi, Pakistan T: +922 134530851 F: +923 212426731 Email: taq@cyber.net.pk taqaiser@gmail.com
Client	The Indus Hospital, Karachi, Pakistan
Key Design Features	<p>The facility is an out patient clinic for infectious diseases. It is part of the Indus Hospital, a 130-bed tertiary care hospital currently being expanded to 750 beds. The hospital is FREE OF COST to all and serves a catchment area of 2.5 million under-privileged people.</p> <p>Basic principles of airborne infection control were used in the design. The facility is an out door tented waiting area, and a covered verandah housing clinics. There is a maximum of natural ventilation, providing great air dilution. Care is taken to provide physical access and safety to all. Patient flows and interaction protocols are incorporated within the plans.</p> <p>The parameters of safety, economy, sustainability, and human dignity are the base of our design. Safe spaces are required for the use of Patients and Health Care Workers. Of equal importance is the patients sense self-dignity. We need to ensure functionality but remember whom the buildings serve.</p>



Exemplary Accessibility/Universal/Inclusive Design Award Projects

UIA Region IV Work Programme “Architecture for All”

www.ulawpafa.hkla.net



Hotel Maya

Year Completed	2005
Location	138 Jalan Ampang, 50450 Kuala Lumpur Malaysia
Architects	<p>Chan Sau Yan Associates / CSYA Studio Pte Ltd C'arch architecture + design Sdn Bhd</p> <p>P&T Architects and Engineers Ltd 33/f, 633 King's Road, North Point, Hong Kong</p> <p>No. 5 Keong Saik Road Singapore 089113</p>
Contact Details	<p>Tel: 6324 3128 Fax : 6324 3138 Email: csyaadmin@csya.com Website: www.csya.com Contact Person:Mr Sonny Chan / Mr Yong Philip</p>
Client	SDB Properties Sdn Bhd
Name of Design Award	<p>Malaysian Interior Design Awards 2005 (Hotels & Restaurant Category)</p> <p>8th SIA Architectural Design Awards (Interior Design Commercial), 2006</p> <p>PAM 2006 Awards</p>
Year of Award	2005 & 2006
Key Design Features	<p>Part of a megastructure of office tower and suites is separated by natural ventilation and lit atriums. Though located in an urban environment its rich in natural elements in its design.</p> <p>Public spaces is an abstract garden which interplay functions and activities within a high volume of material and waterscape.</p> <p>Bamboo planted externally next to the reception and lobby lounge screens off direct sun while the prefunction area of the ballroom, is connected directly to outdoor terraces.</p> <p>This natural element theme is repeated on the 3rd floor where swimming pool encase in a bamboo box and 13th floor of the sky lobby wrap in marble.</p> <p>Natural light and external view of Guestrooms pervade into the internal bathrroms via a full height glass wall separating the bedroom.</p> <p>Natural lighting, plant life and water elements are allowed to permeate throughout the hotel.</p>



Exemplary Accessibility/Universal/Inclusive Design Award Projects

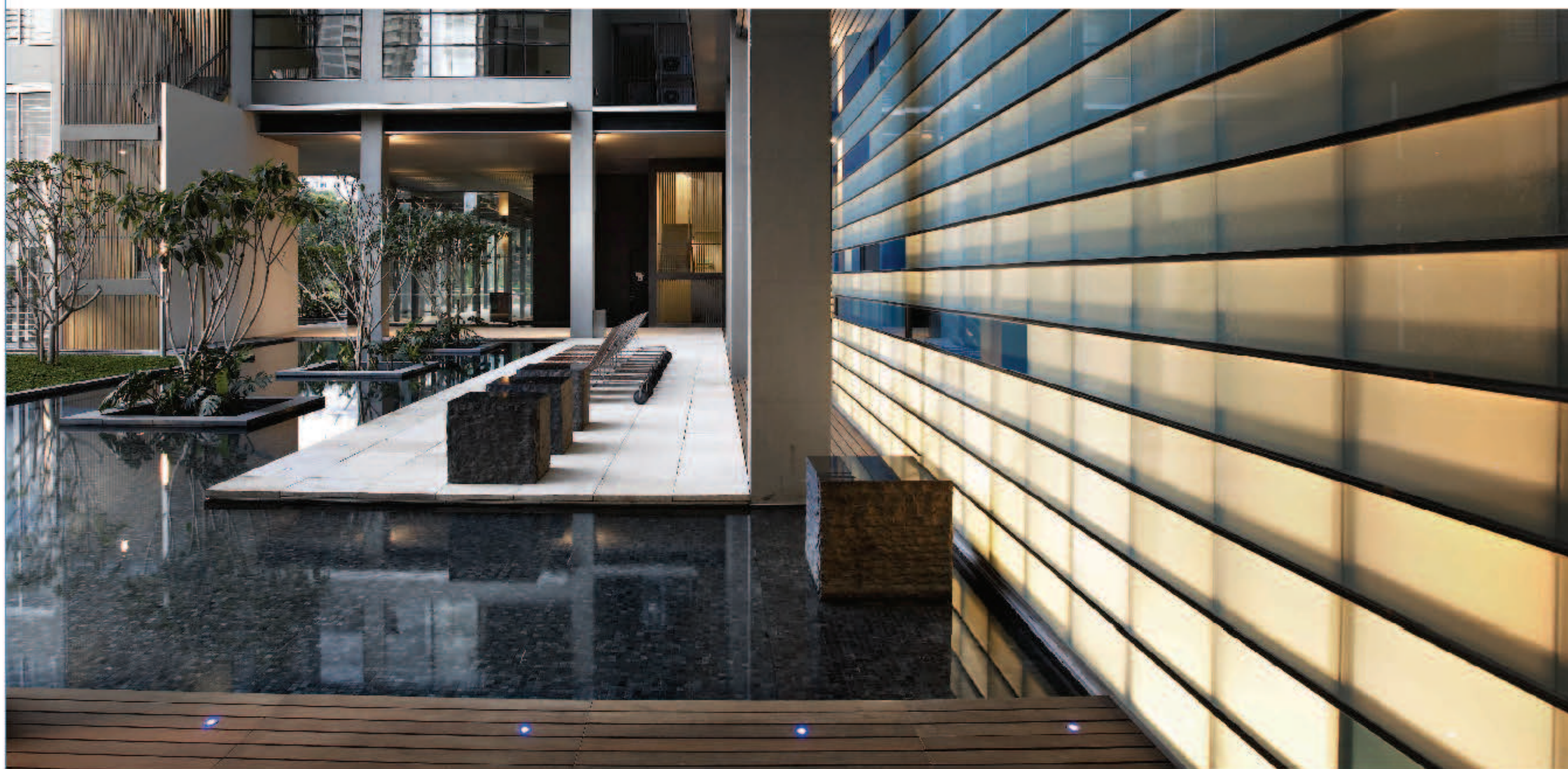
UIA Region IV Work Programme “Architecture for All”

www.ulawpafa.hkila.net



Park Seven Condominium

Year Completed	2008
Location	58 Persiaran KLCC, Kuala Lumpur, Malaysia
Architects	Chan Sau Yan Associates / CSYA Studio Pte Ltd YHSA Sdn Bhd
Contact Details	No. 5 Keong Saik Road Singapore 089113 Tel: 6324 3128 Fax : 6324 3138 Email: csyaadmin@csya.com Website: www.csya.com Contact Person: Mr Sonny Chan / Mr Yong Philip
Client	SDB Properties Sdn Bhd
Name of Design Award	10th SIA Architectural Design Award (Residential Category – Apartments & Buildings) Fiabci Prix d'Excellence Awards 2010 (Residential – High Rise Category)
Year of Award	2010
Key Design Features	<p>The project comprises 7 20-storey blocks of high-end residential apartments with communal activities and 3 basement car parks.</p> <p>The blocks are planned in 2 interconnected radial clusters to allow for 270 degree view per unit, natural light and ventilation. Envisaged as “bungalows in the sky”, each block comprises 1 apartment unit per floor; dedicated private lifts take residents directly to their unit. Apartment interiors are column-free to maximize spatial flexibility.</p> <p>The blocks are linked by a double-story communal deck elevated 6m above street level. This is where communal amenities are located and residents can mingle. Lush landscape and water features on this level provide a tranquil and contemplative environment for residents.</p> <p>Materials are left in their natural state as much as is practicable to reduce wastage and to celebrate their inherent qualities; where possible, local materials are used. Communal areas, service cores and private lift lobbies are all naturally ventilated.</p>



Exemplary Accessibility/Universal/Inclusive Design Award Projects

UIA Region IV Work Programme “Architecture for All”

www.uiawpafa.hkia.net



Khoo Teck Puat Hospital

Year Completed	2010
Location	Yishun Central, Northern Singapore
Architects	CPG Consultants Pte Ltd
Contact Details	jerry.ong@cpgcorp.com.sg
Client	Ministry of Health, Singapore
Name of Design Award & Year of Award	Green Mark Platinum Award 2009 Building And Construction Authority Green Mark Scheme Special Appreciation - The Emerson Cup 2010 Emerson Climate Technologies First Prize - Skyrise Greenery Awards 2010 Singapore Institute of Architects & Singapore National Parks Gold Award - BCA Universal Design Awards for the Built Environment 2011 Building And Construction Authority Winner for Institution Architecture Category FuturArc Green Leadership Award 2011 BCI Asia SIA Design Award - 11th SIA Architectural Design Awards 2011 Institutional Category, Healthcare Buildings Singapore Institute of Architects SIA Building of the Year Award - 11th SIA Architectural Design Awards 2011 Singapore Institute of Architects Design & Health International Academy Awards 2011 International Health Project Over 40,000sqm High Commendation International Academy for Design & Health Design & Health International Academy Awards 2011 Sustainable Design High Commendation International Academy for Design & Health
Key Design Features	<p>Designed as a “hassle-free” hospital, Khoo Teck Puat Hospital (KTPH) harmoniously brings together the elements of accessibility, comfort and convenience.</p> <p>Taking care of the healthcare needs of patients at KTPH means more than just providing an extensive range of medical services and specialties within one hospital. It is also about creating a healing environment. The site next to Yishun Pond presented the opportunity to create a design in which nature would nurture – where patient recovery would be faster and general well-being enhanced.</p> <p>KTPH was conceived with the overarching agenda to provide a welcoming and inclusive premise for the community. The hospital had been designed with Universal design features with patients’ comfort, accessibility, and convenience in mind. From intuitive way-finding to logical clustering of services down to provision of anti-slip meal plate for stay-in patients, every detail has been orchestrated to ensure a seamless and hassle-free experience for patients and visitors.</p>



Exemplary Accessibility/Universal/Inclusive Design Award Projects

UIA Region IV Work Programme “Architecture for All”

www.uiawpafa.hkia.net



River Vista@Kallang

Year Completed	2010
Location	Singapore
Architects	Siw Fer Lin (Architect / Qualified Person) Bonita Tan (Design Architect)
Contact Details	Siw Fer Lin Tel: +65 6248 1181 Email: lohpw@surbana.com Frven Lim Director (Architecture) Tel: +65 6248 1216 Email: frvenlim@surbana.com
Client	Housing & Development Board
Name of Design Award	BCA Universal Design Award for Built Environment
Year of Award	2011
Key Design Features	As a public housing project planned for a myriad of household profiles and residents of all ages, River Vista @ Kallang employs thoughtful universal design principles from the precinct level down to the individual apartment units, ensuring that functional aspects of safety and accessibility are well integrated with aesthetic and contextual considerations. With service roads internalized within the development, pedestrian routes not only integrate seamlessly with the adjacent riverfront promenade, but also respect existing circulation patterns across the surrounding neighbourhood. Sheltered barrier-free routes connecting all residential blocks, carpark and amenities ensure that safety and convenience are not compromised. Beyond accessibility concerns, inclusive design is also a priority, with specially designed play equipment offering alternative play modes for different needs, creating an environment that is not only functional but also sensitive to its varied residential demographic.

