

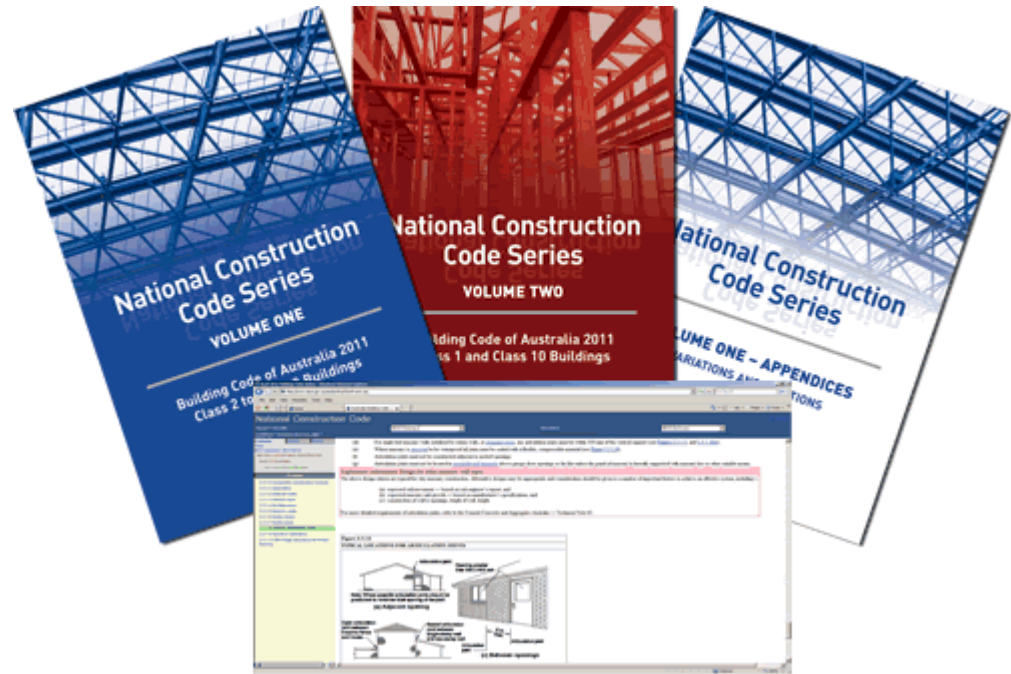
Removing Discrimination by
Design for All:
An Australian Perspective

A presentation by Eric Martin

Building Regulator Framework

- National Construction Code (NCC) was the Building Code of Australia

<http://www.abcb.gov.au/>



- Disability Discrimination Act 1992 (DDA)

http://www.hreoc.gov.au/disability_rights/dda_guide/dda_guide.htm

2011 Changes

- NCC 2011

<http://www.abcb.gov.au/>

- Disability (Access to Premises – Buildings) Standard 2010

http://www.hreoc.gov.au/disability_rights/buildings/access_to_premises.html

Meeting the requirements of these means meeting the obligations of the DDA for the items the NCC covers.

Content of NCC 2011

- Building Access Requirements (BCA 3.1 and Table D3.1)
- Access to Building (BCA Clause D3.2)
- Within Building (BCA Clause D3.1, Table D3.1, Clause D3.3)
- Exemptions or Areas where Complying Access is not Required (BCA Clause D3.
- Car Parking (BCA Clause D3.5, Table D3.5)
- Signage (BCA Clause D3.6 and Specification D3.6)
- Hearing Augmentation (BCA Clause D3.7)
- Tactile Indicators (BCA Clause D3.8)
- Wheelchair Spaces in assembly Buildings (BCA Clause D3.9, Table D3.9)
- Swimming Pools (BCA Clause D3.10 and Spec D3.10)
- Ramps (BCA Clause D3.11)
- Glazing in an Accessway (BCA Clause D3.12)
- Lifts (BCA Clause E3.6, Table E3.6))
- Toilets (BCA Clause F2.4, Table F2.4)
- Lighting (BCA F4.4)
- Public Transport Buildings (BCA H2)

Main Australian Standards

- AS 1428.1-2009
Design for access and mobility - General requirements for access - New building work
- AS 1428.4.1 - 2009
Design for access and mobility - Means to assist the orientation of people with vision impairment - Tactile ground surface indicators
- AS 2890.6 - 2009
Parking facilities - Off-street parking for people with disabilities

<http://www.standards.org.au/>

Items Not Covered in NCC 2011

- Egress
- Way finding (beyond minimum signs to lifts and toilets)
- Fitout, particularly counters, tea points, drinking fountains, telephones.
- Design for hearing impaired (except for sound augmentation in some situations)

The Architectural Challenge

Embrace this newly defined requirement and
ensure a universal design

OFFICES/PUBLIC BUILDINGS



All areas to be
accessible

Multi Unit Development



10% to be
adaptable
(AS4299)

Common
areas
accessible



Common Areas Accessible

Hotel/Motel/Student Residences



% of rooms
to be
accessible



All common
areas
accessible

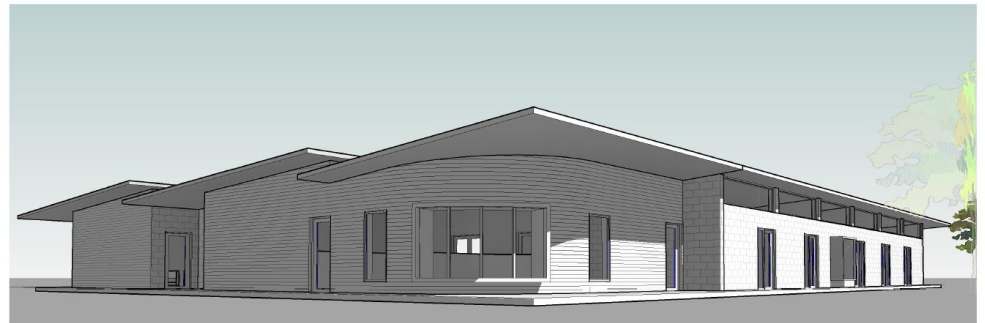
Single Residences

- Livable housing adopting universal principles
<http://www.fahcsia.gov.au/...LivableHousingDesignGuidelines.aspx>
- Silver, Gold and Platinum Levels
- Established June 2011 and will be implemented over next few years as a collaboration of community, industry and government



Integration of People with Disabilities into Society

- Specifically design residences for small groups with carers especially as parents age and are not able to care for children with disabilities, including intellectual disabilities
- Community Living Project: a new village initiative



Public Space

- Vision Impaired
- Hearing Impaired
- Mobility Impaired



Outcome and Future

Some architects are promoting a new design ethic, but it will take time to be implemented and will require ongoing regulation to ensure it happens.



Eric Martin, AM

Architect

Heritage Advisor

Access Consultant

eric@emaa.com.au